

## Installation Information

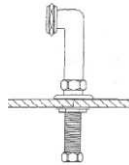
### Item #P0819 or P0822 with Lever Handles (not shown) Deck Mount Faucet Singles

To be installed only by a qualified, licensed plumber

Please use Teflon tape on all threaded connections.

**Minimum hole diameter in tub or deck is 1" diameter. Maximum deck/tub thickness is 1 ¼". When attaching parts, be careful not to scratch the finish when tightening the nuts.**

1. Shut off water supply before installation.
2. Insert the threaded nipples of the hook up kit into the bottom of the deck mount coupler. The shorter end of nipple goes to coupler. Use Teflon tape on all threads.
3. Insert the nipples of the faucet into the holes in the tub or deck. Secure them to the deck by threading the lockdown nuts onto the nipples from under the rim/deck. Attach desired supply line.



4. Make no adjustments to valves or valve stems. They are tested at the factory for optimum performance.

