

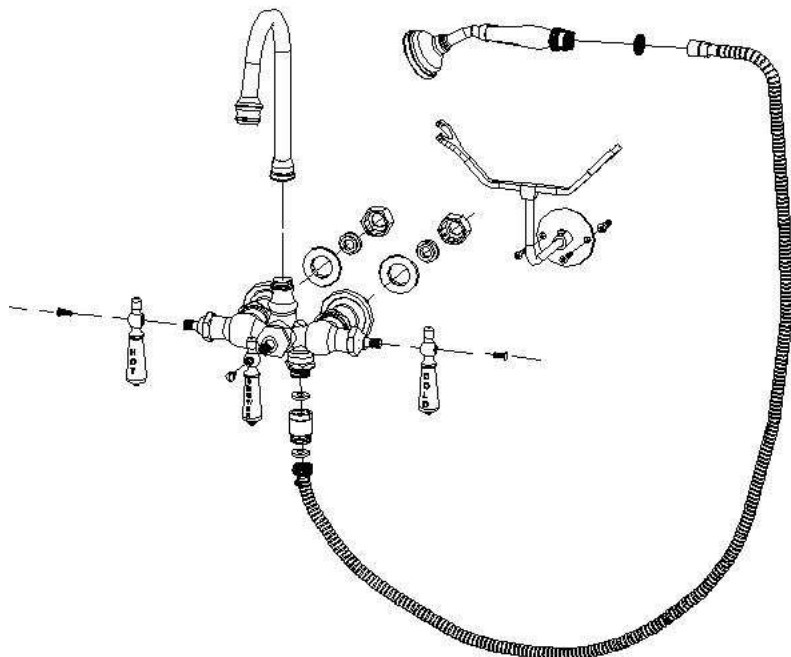
Installation Information

Item #P0155

Leg Tub Diverter Faucet with Handheld Shower, 3 3/8" Centers

Warranted only when installed by a qualified, licensed plumber. Please use Teflon tape on all threaded connections.

1. Shut off the water supply to the fixture before installation.
2. Insert the faucet body inlet tubes through the 2 holes on the tub. Screw the lock nuts onto the threaded shanks and tighten to secure the faucet to your tub.
3. Attach your spout and tighten the hold down nut hold in place.
4. Attach the handles with the screws provided.
5. Mount the wall bracket in desired location.
6. Add the vacuum breaker to the outlet at bottom of faucet body.
7. Attach hose end with nut and washer to the vacuum breaker and the tapered end of the hose with washer to the handheld shower.
8. Rest your handheld shower on the cradle.
9. Attach your supply lines to the 3/4" IPS faucet inlet tubes.
10. Remove the aerator from the end of the spout and turn on the water supply to flush the hot and cold lines until the water is clear.
11. Make no adjustments to valves or valve stems. They are tested at the factory for optimum performance.



Parts Included:

- Faucet Body, 3 3/8" centers
- Spout
- Handles (3)
- Lock Down Nuts
- Supply Nuts & Washers
- Vacuum Breaker
- Handheld Shower & Hose w/washers
- Wall Bracket